

CHERRY BOMB
Disturbing The Peace Since 1968

EXTREME
Unique Wing Plate Design • Perfect for Off-Road
100% Welded Steel • Powder Coated Red

CLICK HERE TO LEARN MORE

SEMA 2011: MAC's Custom Tie Downs New Engine Pivot Plate

By John Gibson, posted on Nov 8, 2011 in SEMA

(0) Comments

Like Tweet 0 Email

Print page

There's nothing more frustrating then getting an engine up in the air and just about into the engine bay, only to learn that you put the chain in the wrong hole on the engine plate. This means you have to pull the engine back out, set it back on the ground and attach it into the correct hole. But what if there was an easier way where you could adjust the engines angle without having to disconnect the cherry picker? Well it seems that [MAC's Custom Tie Downs](#) has created just that!

“
Quite simply put, the Macs Pivot Plate is just a better mouse trap for engine installation or removal
”

Debuted for SEMA the new Macs Pivot Plate might be one of the coolest contraptions we saw the entire show. "Quite simply put, the Macs Pivot Plate is just a better mouse trap for engine installation or removal." Said Colin McLemore the founder of Macs Custom Tie Downs.

The Macs Pivot Plate allows you to articulate the engine angle up to 35 degrees to remove or install the engine. So no more will you have to deal with forcing pulling down on the engine transmission to



BluePrint ENGINES

302 FORD HOT ROD ENGINE

Horsepower: 300+ @ 5300rpm
Torque: 320+ @ 3800rpm
Warranty: 30 Month, 50,000 Mile
Available with rear sump.

ONLY \$3499.99 EA

SPEEDWAY MOTORS EXCLUSIVE!!!

JOIN THE ROD AUTHORITY NEWSLETTER!

SUBSCRIBE

Babe of The Month:
Melissa Hayes

MORE >>

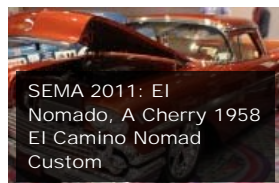
add more angle to the engine, now you can simply make changes on the fly to make things easier on everyone working on the installation or removal.

Made in the USA, the Pivot plate fits most 2-bolt and 4-bolt carburetor applications, but it also has a few adapters available that allows you to use it on a variety of engines:

- GM throttle body injection
- Ford 4.6L, 5.4L, and 6.8L Modular Motors
- Ford 5.0L
- Ford '32 - '53 Flathead
- 502 Ramjet and 454 Vortech
- GM LS1 - LS9
- 6-71, 4-71, 3-71 blowers
- TPI GM V8 Fuel Injection



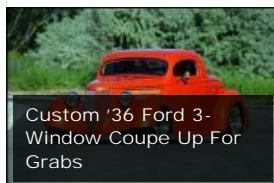
Make sure you check out [MAC's Custom Tie Downs](#) for not only the new pivot plate but also their entire line of custom tie downs, and see why they call themselves the one stop shop for any cargo securing items.



SEMA 2011: El Nomado, A Cherry 1958 El Camino Nomad Custom



SEMA 2011: WinningRide.com's 2011 SEMA Featured Ride: '56 "Badillac"



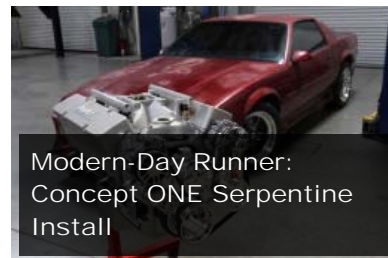
Custom '36 Ford 3-Window Coupe Up For Grabs

Like

Tweet 0



Facebook social plugin



Modern-Day Runner: Concept ONE Serpentine Install

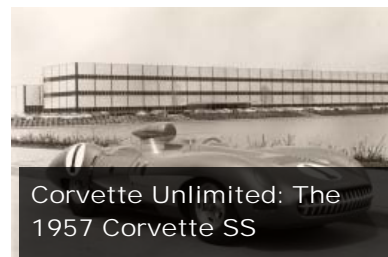


Tremec's T-56 Magnum: 6-Speeds and Big Torque for Street or Strip

MORE »



Rocky Nash's '34 Ford Blurs Custom With Kit Car



Corvette Unlimited: The 1957 Corvette SS

MORE »

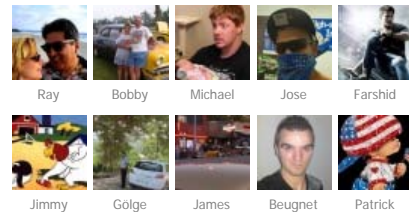
Find us on Facebook



Rod Authority

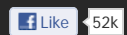


52,637 people like Rod Authority.



Facebook social plugin

ROD SHOWCASE EVENT COVERAGE FEATURES TECH ROD GIRLS NEWS SPONSORS ABOUT US



Copyright 2011 Rod Authority. A property of powerTV Media. All rights reserved. [Privacy](#) [Corporate](#)

